



索尔光伏

PVSOLVER

solar mounting solutions

Technical Data

AL-003 - Normal Rail

> **description**
supporting rails for a wide range of solar modules



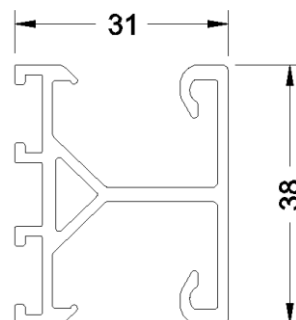
> **ref no.**
AL-003

> **technical specs**

material specifications
aluminum alloy AL6005

dimensions

length = upon request
width = 31mm
height = 38mm
weight = xx kg/m



applications

usage area supporting solar modules and connecting L-feet
tightening torque 15Nm for bolts and nuts
customizability upon request
section property upon request

bolting hardware

N.A.

working with channel nut to fix L-feet, support end and mid-clamps



索尔光伏

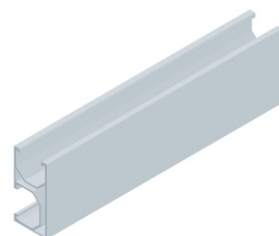
PVSOLVER

solar mounting solutions

Technical Data

AL-007 - Normal Rail

> **description**
supporting rails for a wide range of solar modules



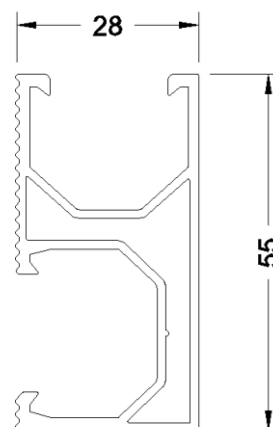
> **ref no.**
AL-007

> **technical specs**

material specifications
aluminum alloy AL6005

dimensions

length = upon request
width = 28mm
height = 55mm
weight = 0.83kg/m



applications

usage area supporting solar modules and connecting L-feet
tightening torque 15Nm for bolts and nuts
customizability upon request
section property upon request

bolting hardware

N.A.

working with channel nut to fix L-feet, support end and mid-clamps



索尔光伏

PVSOLVER

solar mounting solutions

Technical Data

AL-010 - Base Rail

> **description**
supporting rails for a wide range of solar modules



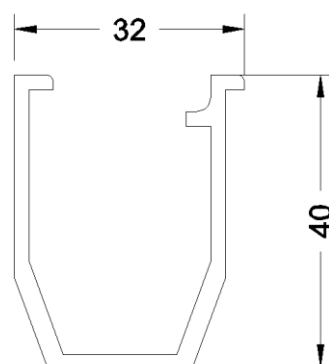
> **ref no.**
AL-010

> **technical specs**

material specifications
aluminum alloy AL6005

dimensions

length = upon request
width = 32mm
height = 40mm
weight = xx kg/m



applications

usage area specially for trapezoidal metal roof
tightening torque 15Nm for bolts and nuts
customizability upon request
section property upon request

bolting hardware

N.A.

working with channel nut to secure normal rails as base rail
supporting solar normal rails with rail clips



索尔光伏

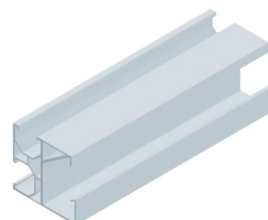
PVSOLVER

solar mounting solutions

Technical Data

AL-031 - Normal Rail with Tray

> **description**
supporting rails for a wide range of solar modules



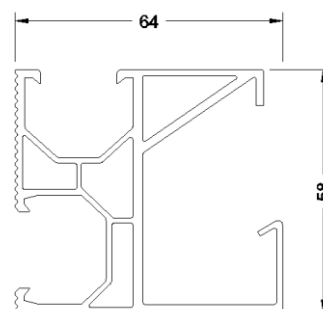
> **ref no.**
AL-031

> **technical specs**

material specifications
aluminum alloy AL6005

dimensions

length = upon request
width = 64mm
height = 58mm
weight = xx kg/m



applications

usage area	supporting solar modules and the tray is designed for cables
tightening torque	15Nm for bolts and nuts
customizability	upon request
section property	upon request

bolting hardware

N.A.

working with channel nut to fix L-feet, support end and mid-clamps



索尔光伏

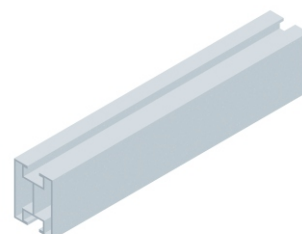
PVSOLVER

solar mounting solutions

Technical Data

AL-033 - Normal Rail

> **description**
supporting rails for a wide range of solar modules



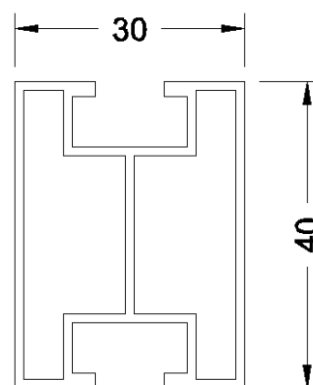
> **ref no.**
AL-033

> **technical specs**

material specifications
aluminum alloy AL6005

dimensions

length = upon request
width = 30mm
height = 40mm
weight = xxx kg/m



applications

usage area supporting solar modules and connecting L-feet
tightening torque 15Nm for bolts and nuts
customizability upon request
section property upon request

bolting hardware

N.A.

working with channel nut to fix L-feet, support end and mid-clamps



索尔光伏

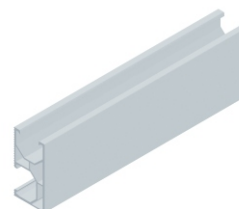
PVSOLVER

solar mounting solutions

Technical Data

AL-051 - Normal Rail

> **description**
supporting rails for a wide range of solar modules



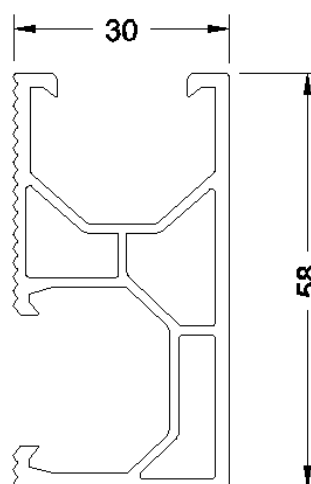
> **ref no.**
AL-051

> **technical specs**

material specifications
aluminum alloy AL6005

dimensions

length = upon request
width = 30mm
height = 58mm
weight = xxx kg/m



applications

usage area supporting solar modules and connecting L-feet
tightening torque 15Nm for bolts and nuts
customizability upon request
section property upon request

bolting hardware

N.A.

working with channel nut to fix L-feet, support end and mid-clamps



索尔光伏

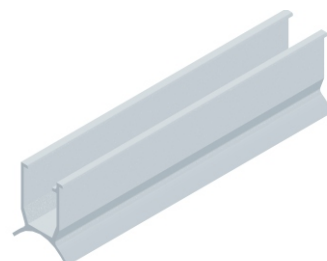
PVSOLVER

solar mounting solutions

Technical Data

AL-052 - Base Rail

> **description**
supporting rails for a wide range of solar modules



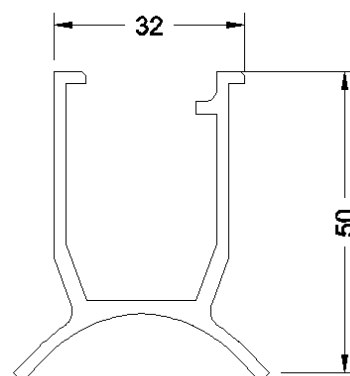
> **ref no.**
AL-052

> **technical specs**

material specifications
aluminum alloy AL6005

dimensions

length = upon request
width = 32mm
height = 50mm
weight = xxx kg/m



applications

usage area specially for corrugated metal roof
tightening torque 15Nm for bolts and nuts
customizability upon request
section property upon request

bolting hardware

N.A.

working with channel nut to secure normal rails as base rail
supporting solar normal rails with rail clips



索尔光伏

PVSOLVER

solar mounting solutions

Technical Data

AL-055 - Normal Rail

> **description**
supporting rails for a wide range of solar modules

> **ref no.**
AL-055

> **technical specs**

material specifications
aluminum alloy AL6005

dimensions

length = upon request
width = 40mm
height = 26mm
weight = xxx kg/m

applications

usage area supporting solar modules and connecting L-feet
tightening torque 15Nm for bolts and nuts
customizability upon request
section property upon request

bolting hardware

N.A.

working with channel nut to fix L-feet, support end and mid-clamps

